

-

, , :
 , , :
 , , :
 , , :
 , , :
 , , :

holakoik@hotmail.com

// : // :

(Noise-induced hearing loss-NIHL)

. ()

.(p< /)

/

. (/ / :%) / % / () :
 . (/ / :%) / (/ / :%) :

:

. ()

" "

,

.()

().

(Historical Cohort)

.()

()

Cireus,
Sound Level Meter, BSEN 60651, Type 2

.() ()

(Exposed)

.()

)

.(

(Unexposed)

)

: (noise induced hearing loss

:

/ ± /

(/ ± /)

(/ ± /)

(p < /)

/ ± /)

/ ± /

Noise induced

High tone loss (HTL)

hearing loss (NIHL)

(

)

%

()

% / (

(Censoring)

(p < /)

(Pure Tone Audiometry)

) /

(/ / :%

:

()

/ :%

) /

) /

(/

SPSS 11.5

(/ / :%

log

p < /

log rank

rank

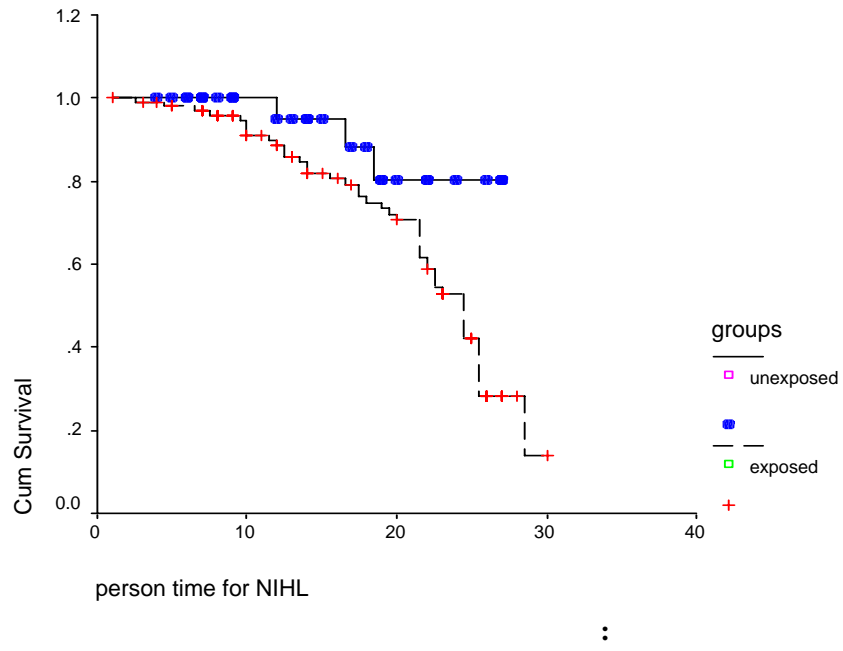
%

(,)

/ ± /

(.

)



References

()

-
10. Bogoch IsaacI. perception about hearing protection and noise induced hearing loss of attendis of Rock concert . Canadian Jurnal of public health 2005;no96:69.
 - 11- Williams W., Purdy S., Murray N., LePage E., Challinor K. IHearing loss and perceptions of noise in the workplace among rural Australians. *Aust. J. Rural Health* (2004) 12, 115–119.